

RL 3: Analyzing Story Elements: Character Development

DIRECTIONS: Use the following organizer to analyze how a character develops in response to conflict in a story or drama. Provide excerpts from the text to support your analysis.

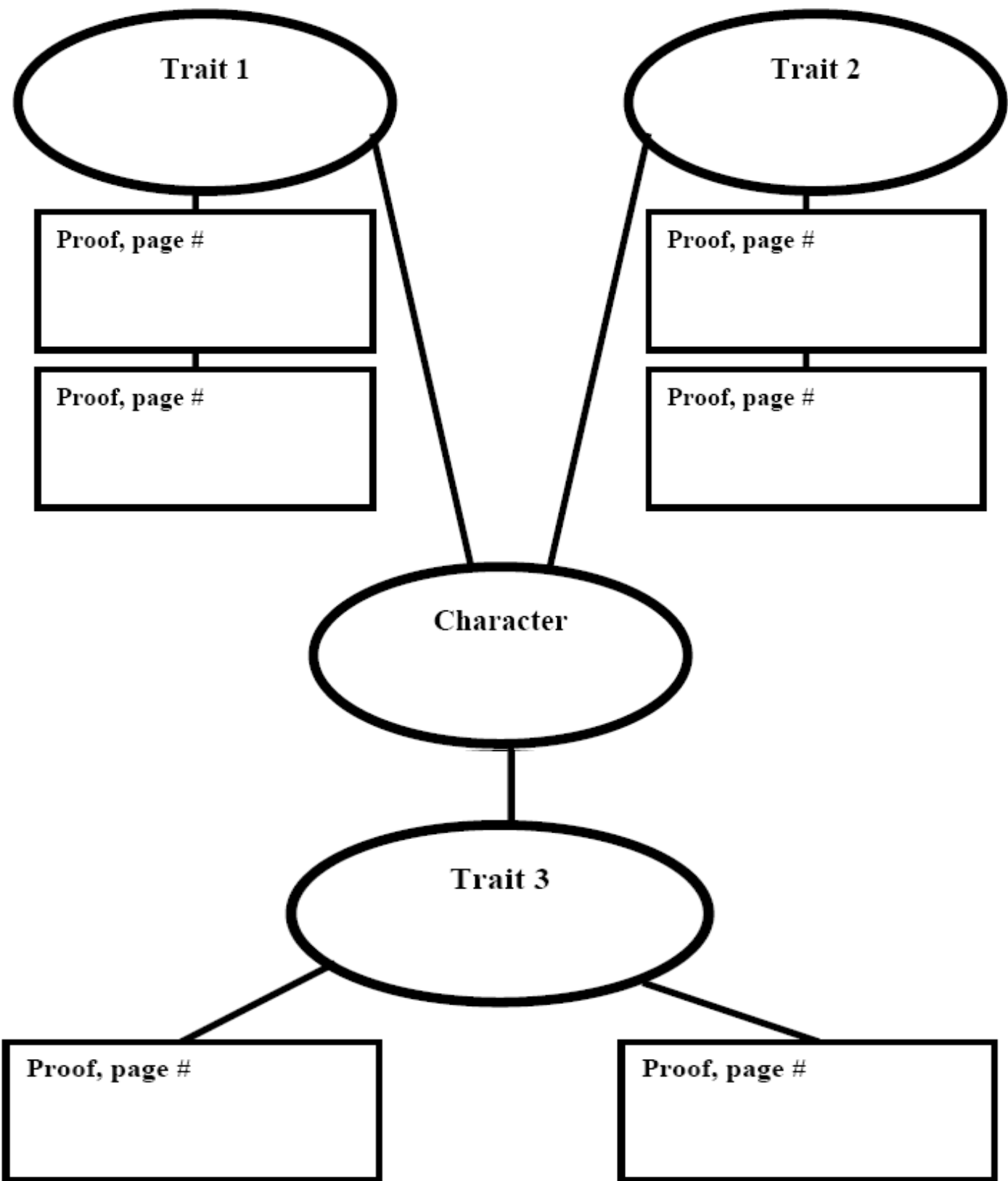
Title: _____		
Character: _____		
	Your Words	Evidence from the Text
Conflict the Character Faces		
How the Character Changes		
Meaning of the Change		

RL 3: Analyzing Story Elements: Character and Plot

DIRECTIONS: Use the following organizer to analyze how a character develops in response to events in the story or drama.

Describe the character in the beginning.	
↓	
Event #1	The character feels...
Event #2	The character feels...
Event #3	The character feels...
Event #4	The character feels...
Event #5	The character feels...
Event #6	The character feels...
↓	
Describe the character at the end.	

Character Map



Character Traits and Textual Evidence

Character Trait:

Quote (pg. ____) :	Explanation:
Quote (pg. ____) :	Explanation:
Quote (pg. ____) :	Explanation:
Quote (pg. ____) :	Explanation:

Trait Chart

Character A: _____

Character B: _____

Trait: _____

Trait: _____

Evidence	page	Evidence	page

Vocabulary for Describing Characters

able	demanding	hopeless	restless
active	dependable	humorous	rich
adventurous	depressed	ignorant	rough
affectionate	determined	imaginative	rowdy
afraid	discouraged	impatient	rude
alert	dishonest	impolite	sarcastic
ambitious	disrespectful	inconsiderate	safe
angry	doubtful	independent	satisfied
annoyed	dull	industrious	scared
anxious	dutiful	innocent	secretive
apologetic	eager	intelligent	selfish
arrogant	easygoing	jealous	serious
attentive	efficient	kindly	sharp
average	embarrassed	lazy	short
awkward	encouraging	leader	shy
boastful	energetic	lively	silly
bold	evil	lonely	skillful
bored	excited	loving	sly
bossy	expert	loyal	smart
brainy	fair	lucky	sneaky
brave	faithful	mature	sorry
bright	fearless	melancholy	spoiled
brilliant	fierce	messy	stingy
busy	foolish	miserable	strange
calm	fortunate	mysterious	strict
careful	forgiving	naughty	stubborn
careless	fresh	nerdy	studious
cautious	friendly	nervous	talented
charming	frustrated	noisy	tender
cheerful	funny	obedient	thankful
childish	generous	obnoxious	thoughtful
clever	gentle	old	thoughtless
clumsy	giving	peaceful	tired
complex	glamorous	picky	tolerant
concerned	gloomy	pleasant	touchy
confident	graceful	polite	trusting
confused	grateful	poor	trustworthy
considerate	greedy	popular	unfriendly
cooperative	grouchy	positive	unhappy
courageous	grumpy	precise	upset
cowardly	guilty	proper	useful
creative	happy	proud	warm
cruel	harsh	quick	weak
curious	hateful	quiet	wicked
dangerous	healthy	rational	wise
daring	helpful	reliable	witty
dark	honest	religious	worried
decisive	hopeful	responsible	young